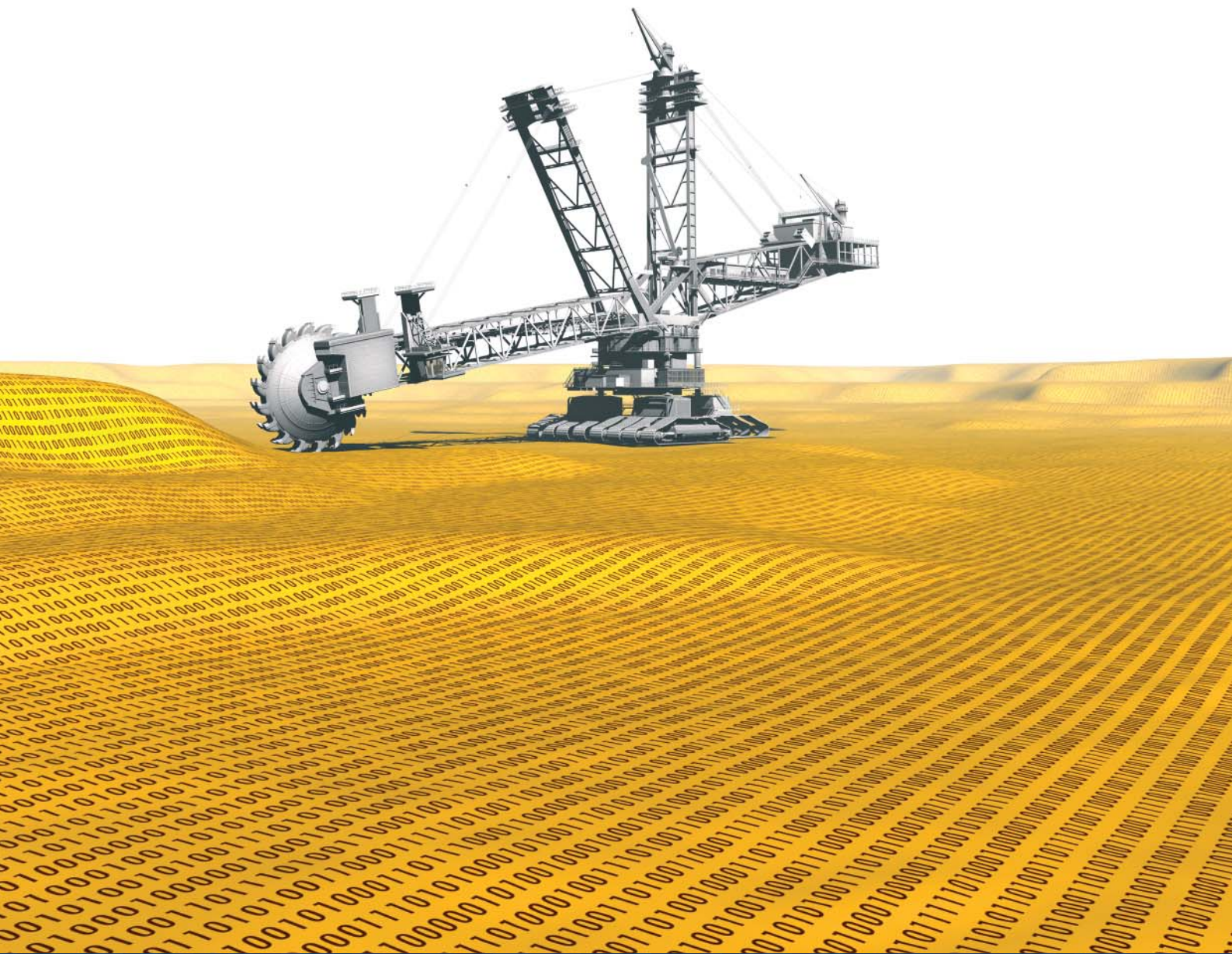




# PREMINER

THE UNIVERSAL TOOL FOR DATA PREPROCESSING



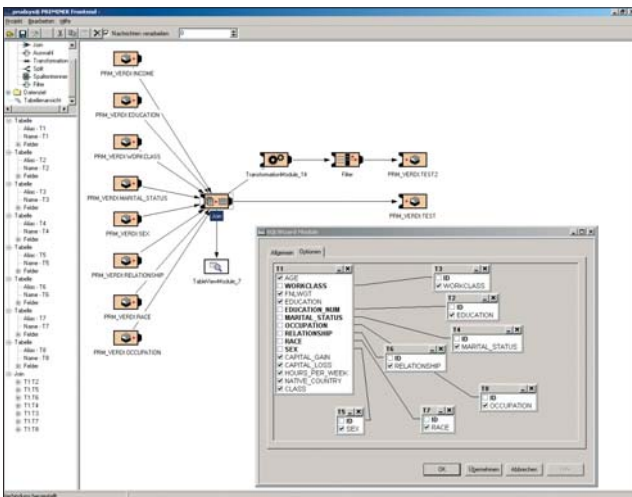
# PREMINER



The PREMINER is the universal tool for the data preprocessing on Data Mining. It is based on a client/server concept and allows a unique Distributed Data Mining. A modul for searching duplicates is integrated in the PREMINER, which makes a separate software for clearing up adresses unnecessary. The Data Pipe Editor (client) represents the universal front end for the configuration of data flow models.

The individual database access servers of the Access Layer provide the read/write access to the following databases:

- Server DBs: Oracle, Sybase, MS SQL and Interbase
- File DBs: dBase and Paradox
- Files: Text files, Excel, SPSS
- Any ODBC or JDBC database



Two operating modes are feasible:

1. The data preprocessing can be performed interactively.
2. Scripts for the regular automatic preprocessing can be created that are run through a scheduler.

The PREMINER Server offers the following functions that can be configured through the client (Data Piper Editor):

- Temporary storage of data for a later fast access
- Scheduled running of complex preprocessing sequences (scripts)
- Transformation of values through built-in programming language
- Import of Data Mining models in PMML format
- Interactive configuration of SQL commands for preprocessing on the database
- Joining of data from several different databases through joins in the server
- Computation of statistics on the data for the explorative viewing of the data within the Data Mining
- Individual and automated reporting

The individual nodes in the Data Piper Editor serve for accessing the data, configuring the joins and transformations and, later, for calling the Data Mining methods. Via them, there can be worked interactively, the data flow can be modeled visually and the ready sequences can be run automatically in scheduled manner.

For further information, visit [www.prudsys.com](http://www.prudsys.com)

*prudsys is a registered trademark of prudsys AG, SPSS is a registered trademark of SPSS Inc., ORACLE is a registered trademark of Oracle Corp., SYBASE is a registered trademark of SYBASE Inc., INTERBASE is a registered trademark of Borland Software Corp.*